

PLUS

Captureboard C-12 Series

PLUS TOOL BOX

Software Operation Manual



We greatly appreciate your purchase of this PLUS Corporation product.

In order to take full advantage of the features of the **PLUS TOOL BOX** software supplied with the Captureboard C-12, please read this software operation manual carefully before use. After reading, be sure to keep the manual for future reference.

Table of Contents

Introduction.....	E-3
What is Captureboard Soft PLUS TOOLBOX?	E-3
Operating Environment	E-3
Copyright and License	E-4
Connection to the Computer	E-5
Description of the included CD-ROM's menu screen (C-12 setup launcher)	E-5
Installation of the Software.....	E-6
Check Prior to Installation	E-6
Installation of the PLUS TOOLBOX	E-6
Uninstallation of the PLUS TOOLBOX.....	E-8
Menu Screen Names and Functions.....	E-9
Menu	E-9
Superimposed Image Display Screen.....	E-11
Basic Operation	E-13
Superimposing captured images.....	E-13
Fine Adjustment of the Captured Image	E-17
Capture Settings.....	E-18
Hardware Setup	E-20
Creation and Editing of Headers/Footers	E-23
Names and Functions of the Screen Parts	E-23
Creating a New Header/Footer	E-26
Updating the Internal Header/Footer Information of the Captureboard.....	E-29
Update the Captureboard's Internal Program.....	E-31
About the security settings	Rear cover

Trademarks

* Microsoft and Windows are registered trademarks or trademarks of the Microsoft Corporation in the United States and other countries.

* Adobe and Adobe Acrobat Reader are trademarks of Adobe Systems Incorporated.

Due respect will be afforded to the trademarks of the various companies and to product trademarks even when not expressly noted.

In addition, product names and company names contained in this manual are registered trademarks or trademarks of the respective companies.

(1) The contents of this manual may not be reprinted in part or whole without permission.

(2) The contents of this manual are subject to change without notice.

(3) Great care has been taken in the preparation of this manual; however, should any questionable points, errors, or omissions be apparent, please contact us.

(4) Notwithstanding part (3), PLUS Corporation will not be responsible for any claims or lost profits or other matters deemed to be the result of using this unit.

(5) The separately sold printer is designed to be used as a peripheral device for a PLUS Captureboard. The printer is not guaranteed to operate when connected directly to a computer.

(6) Manuals with incorrect collating or missing pages will be replaced.

Introduction

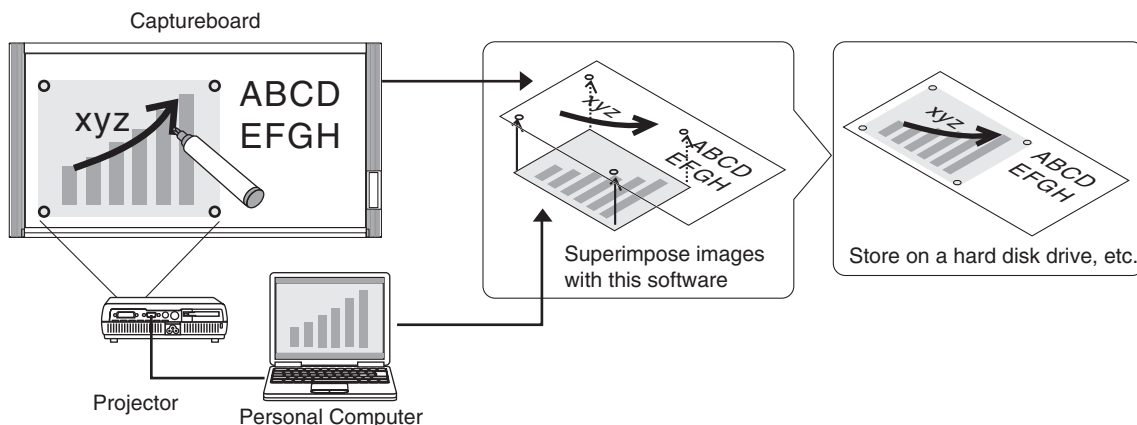
What is Captureboard Soft PLUS TOOLBOX ?

PLUS TOOLBOX allows the user to capture the captureboard's scanned data as an image using a TWAIN driver then superimpose this over a projector's projected image on the computer and store this as image data.

There is also a function for positioning the projector's projected image and the captureboard's scanned data easily and automatically by detecting the projector's projection position information marked on the captureboard's sheet surface.

Furthermore, PLUS TOOLBOX allows the user to set the captureboard's operating environment and security settings from the computer and create headers/footers that can be stored on the captureboard.

* In this manual, TOOLBOX may be referred to as "this software" or "the software", and the captureboard may be referred to as "main unit", "this unit" or "the unit".



Notice

- This software is designed to store records of meetings. It may not reproduce and store accurate colors or image quality. Also note that the capture data automatic positioning function is not something that guarantees an accurate positioning operation.
 - The "PLUS TOOLBOX" software is a unified program for copyboards (including captureboards).
- * Superimposing the scanned data over the projector's projected image is possible when used in combination with a captureboard.

Operating Environment

Supported OS:	Microsoft Windows 2000 Professional (Service Pack 4 or higher) / XP (Home Edition /Professional Edition Service Pack 2 or higher) / Vista (32 bit version)
Supported PC:	IBM PC/AT fully compatible computers that run the aforementioned OS
CPU:	Pentium III 1.2GHz or greater
Memory:	Windows 2000 (128 MB or greater), Windows XP (256 MB or greater), Windows Vista (512 MB or greater)
Connector:	USB port (type A), interface compatible with USB 1.1 and USB 2.0 standards.
Available hard disk space:	40 MB or greater (not including space for storing images)
Display resolution:	800 x 600 pixels or greater
Peripheral devices:	CD-ROM drive, standard USB ports
Web browser:	Internet Explorer 6.0 or higher

Notice

- All operations are not guaranteed in the aforementioned operating environment.
- Windows 95, 98SE/Me, NT, 2000 Server, Server 2003, and Vista (64 bit version) are not supported.

Copyright and License

◆ Copyright

PLUS Corporation (hereafter called We) holds the copyright of this software and related works which are protected by Japan's Copyright Law and international treaties.

Copyright © Since 2008 PLUS Corporation All rights reserved.

The PLUS TOOLBOX and header/footer software uses fonts supplied by Information-Technology Promotion Agency, Japan. The text file of the supplied CD-ROM is a user license agreement for the use of the software.

Only use this software after carefully reading and consenting to the software user license agreement.

* Check the text file in the supplied CD-ROM: "General User's IPA Font User License Agreement".

◆ Disclaimer

We shall not be responsible in any way for direct or indirect damages that may arise from this software or products derived from related software. We shall not be responsible in any way for damages as a result of the machine or medium. Furthermore, We shall not be responsible in any way that may relate to the effects of the results of using this software.

◆ Terms of Use and Terms of Distribution

- We shall not be responsible in any way for any kind of damages arising from the use or inoperability of this software.
- We shall not be liable in any way for support of this software, any kind of warranty, correction of trouble or continuation of version upgrades, etc.
- Provided that you consent to the aforementioned matters, you shall be permitted to use the software for non-profit purposes for personal use and use within a company.
- When "this software" is mentioned, it refers not only to the executable file, but to all of the component files including Help and appended text.

◆ Support

We call support the provision of all kinds of information including answers to questions, requests, trouble reports, and other matters, and the scope of our support shall be limited to the functions and operation of this software.

Problems that arise in using this software cross many paths including those attributable to the personal computer, the OS, other application software, and other peripheral devices. Accordingly, we only support problems that are attributable to this software. Also, this software is subject to version upgrades without prior notice due to the technical advancement of hardware and software. The customer can receive and use upgraded versions of this software through a method determined by us. Note that version upgrades will be limited to customers who consent to the aforementioned conditions of use.

* Upon downloading this software from the PLUS Corporation Web site, or installing it from the CD-ROM, the customer is deemed to have consented to each of the terms.

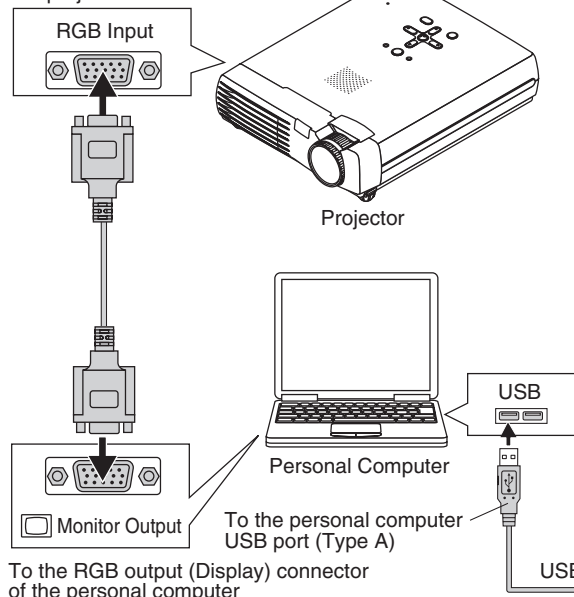
Connection to the Computer

The Captureboard must be connected with a computer in order to use this software.

Notice

- Do not connect this machine to the personal computer before installing the software.
- Do not connect more than one Captureboard to one personal computer.

To the RGB input connector of the projector



Captureboard

To the RGB output (Display) connector of the personal computer

Note

This is a representative example of personal computer and projector connections. Please see the manuals of your personal computer and projector for details.

Description of the included CD-ROM's menu screen (C-12 setup launcher)

The menu screen is displayed automatically when the included CD-ROM is inserted into the computer's CD-ROM drive.

■ Installation of software

When clicked, the installer is launched and the "PLUS TOOLBOX", TWAIN driver and USB driver are installed simultaneously.

■ User's Manual

When clicked, the User's manual (in PDF format) open.

■ Software Manual (this manual)

When clicked, the PLUS TOOLBOX software's operating instructions (in PDF format) open.

■ Acrobat Reader

This is an application for viewing files in PDF format.

If the PDF files cannot be opened, click "Acrobat Reader" on the menu and follow the instructions on the screen to install.

* Browse CD

Click this to view the contents of the CD-ROM using the computer's Explorer application.

* Copyright & Usage

Click this to open the copyright, usage conditions and other information.



Installation of the Software

When “Install Software” on the included CD-ROM’s menu is clicked, the “PLUS TOOLBOX”, TWAIN driver and USB driver are installed.

Check Prior to Installation

1. Check whether your personal computer satisfies the operating environment. (See page E-3)
2. Check that your personal computer is not currently connected to this machine via USB.
3. At the time of installation, install with Administrator rights (i.e., a user having administrator rights) for Windows 2000, or with a Computer Administrator rights (account) for Windows XP/Vista.
4. Close all other applications that are running.

Installation of the PLUS TOOLBOX

1

Insert the supplied CD-ROM into the CD-ROM drive of the personal computer.

The menu screen will be displayed automatically.

If the menu screen is not displayed automatically, double click CD-ROM icon and double click “autorun.exe”.

2

Click “Installation of Software”.

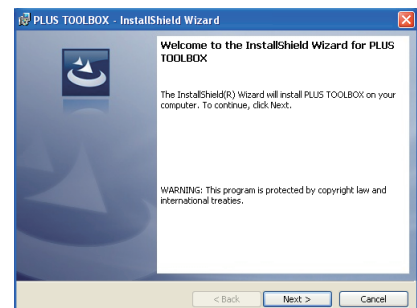
The installer will start.



3

Follow the instructions of the installer and start the installation.

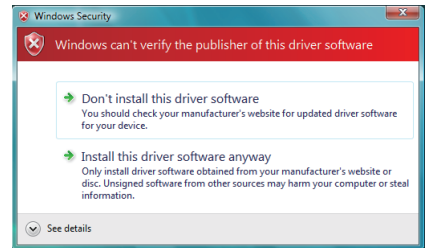
The PLUS TOOLBOX, the TWAIN driver and the USB driver will be installed at the same time.



Installation of the Software

Note

- * The Windows Security dialog box will be displayed with Windows Vista.
Select "Install this driver software (I)".
- * When using Windows Vista, each time the installer is started, the User Account Control dialog box is displayed.
Select "Continue" and continue with the installation.



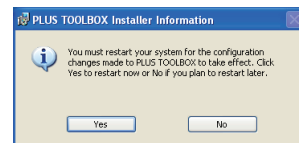
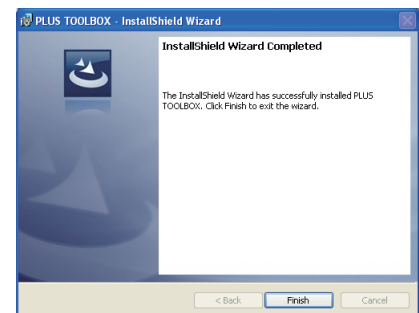
4

Click "Finish".

The "Installer Information Dialog Box" will be displayed.

Click "Yes" and restart the personal computer.

When this software is installed on the personal computer for the first time, continue to make the following connections and operations.



■ Installing the USB Driver

The USB driver is installed on the computer with the installer, but this does not complete association with the USB port. In order to use PLUS TOOLBOX, install using the procedure described below with the Captureboard connected.

Preparation

1. Press the ON/Standby button of the Captureboard to turn on the power.
2. Use a USB cable to connect the USB port of the personal computer with the PC dedicated USB port of the Captureboard. (See Page E-5)

The New Hardware Search Wizard will be displayed.

Install according to the New Hardware Search Wizard.

Continue on next page

Installation of the Software

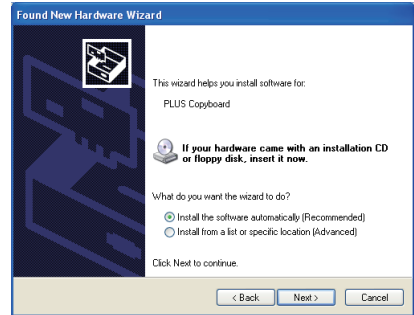
1

Select **“Install Software Automatically (Recommended)”** and click **“Next”** (when using Windows XP).

Start the installation of the USB driver.

Note

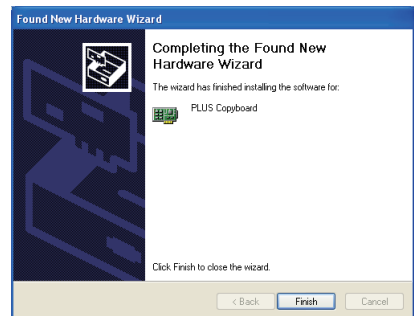
- * Installation will be completed automatically with Windows 2000/Windows Vista.



2

Click **“Finish”**.

This software can now be used.



Uninstallation of the PLUS TOOLBOX

1

Selecting [Start] → [Control Panel] will display the **Control Panel** screen.

Check that your personal computer and the Captureboard are not currently connected by USB.

2

Double click **“Add or Remove Programs or Applications”** (this will differ depending on the OS) to display the **“Add or Remove Programs Properties”** screen.

3

Select **PLUS TOOLBOX** from among the list displayed and click [Change / Remove] to display the Add or Remove wizard screen.

4

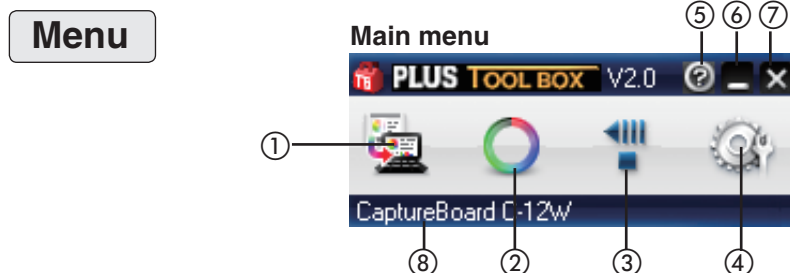
Selecting the [Remove] radio button of the wizard and clicking [Next] will start the uninstallation.

Note

- * “Add or Remove Programs” will be displayed for Windows XP/Vista.
- * When using Windows Vista, each time the uninstaller is started, the User Account Control dialog box is displayed. Select “Continue” and continue with the uninstallation.

Menu Screen Names and Functions

When a computer on which the “PLUS TOOLBOX” dedicated software is installed is connected to the Captureboard, the “PLUS TOOLBOX” main menu appears.



① Scan button

Displays the projection image superimposed screen.

Yes: Starts the capture of the image (projected by the projector) that is displayed on the personal computer screen, and the hand drawn image of the sheet surface.

No: Starts the capture of only the hand written and drawn image of the sheet surface. There will not be superimposing with the image projected by the projector.

✖ (Close): Closes the projection image superimposed screen.

② Mark button

Switches the display of the positioning ○ marks of the projection image.

Each click switches between “Display” and “Hide”.

The default setting is “Display”.

③ Feed/Stop button

Scrolls the sheet one page to the left. When pressed while scrolling, the sheet returns to the start position.

④ Setup button

Click this to display the settings screen.

The settings screen consists of the “Hardware Setup”, “Capture Setup”, “Header/footer”, “Copyboard Firmware Update” and “Security” tabs.

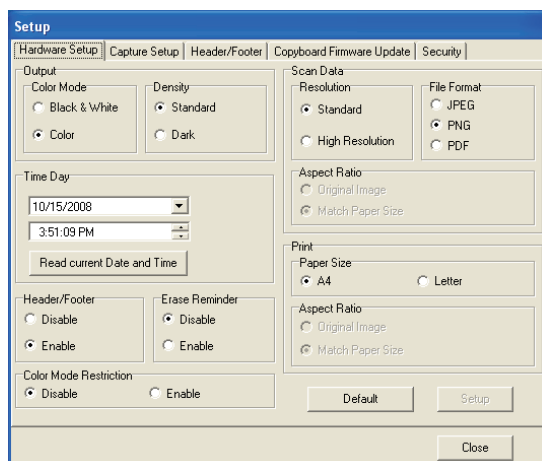
Click a tab to switch to the corresponding screen.

Notice

- To set the “Security” settings, contact you nearest PLUS Corporation sales office, dealer or store.

Hardware Setup:

Set the Captureboard’s operating environment here. See page E-20.



Menu Screen Names and Functions

Capture Settings:

These settings are used when creating superimposed images. See page E-18.

(1) Select image for projection:

Selects the number of the monitor that is connected to the projector.

The default setting is “Display 1”. This software automatically searches for the number of connected monitors.

(2) Select color for positioning:

Selects the color of the ○ mark that detects the position of the projection image of the projector.

Select from among No specific color selected, Red, Green, Blue, Black. The default setting is “No specific color selected”.

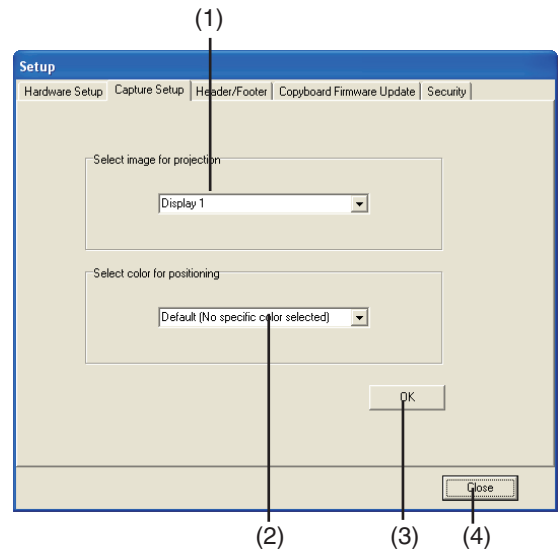
The setting contents will not be stored unless the screen is closed by clicking the [OK] button.

(3) OK

Enters the setting.

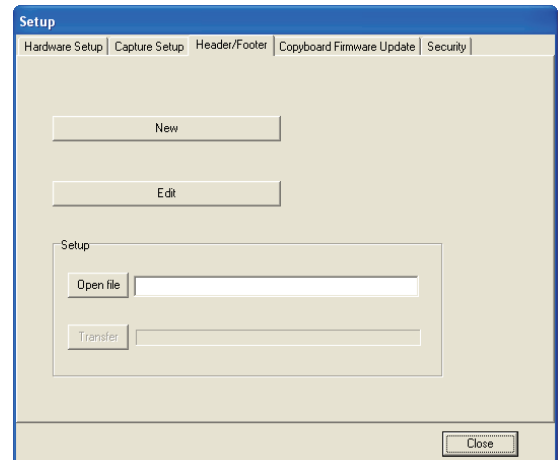
(4) Close:

Closes the settings screen.



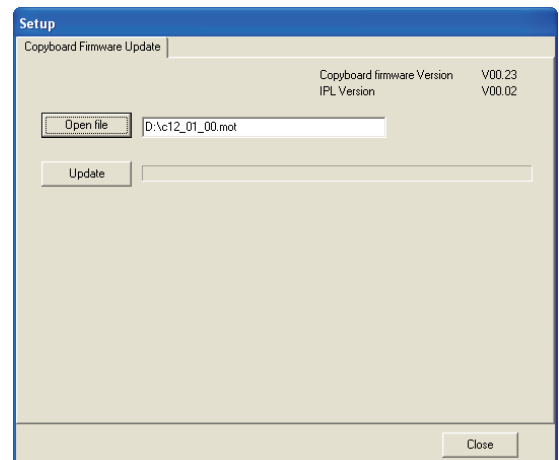
Header/Footer:

This is used for the creation or editing of headers and footers. See Page E-23



Copyboard Firmware Update:

Use this to update the Captureboard's internal program. (See page E-31.)



Menu Screen Names and Functions

⑤ (Help)

Click this to display the operating instructions.

⑥ (Minimize)

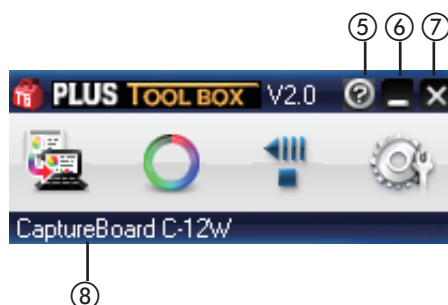
Click this to minimize the menu screen, displaying it as an icon on the task bar.

⑦ (Close)

Click this to exit the program.

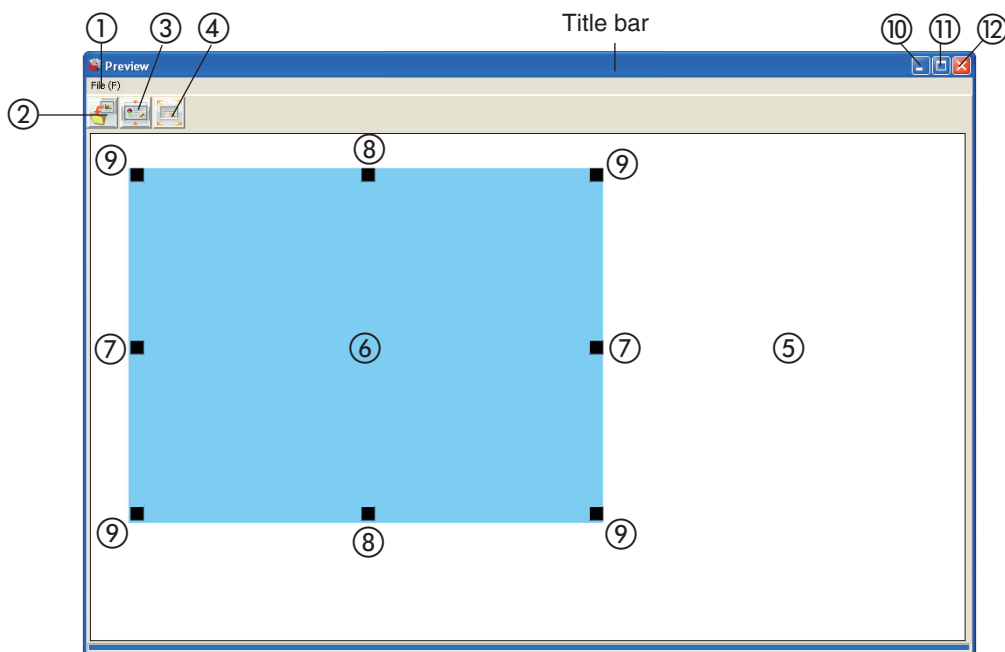
⑧ **Device indication**

This displays the model that is currently connected.



Superimposed Image Display Screen

The superimposed image display screen is displayed when “Yes” is clicked on the “SCAN” button (see page E-9 section 1) and screen and the hand written and drawn image of the sheet surface is captured by the personal computer.



(This illustration shows the superimposed image display screen for model C-12W.)

① **File Menu**

Save (S): Overwrites and saves using the current name.

Save as (A): Saves with a different name or to a different location.

Print (P): Prints using the printer that is connected to the personal computer.

② **Save Button**

Saves when there is save data. Opens the save screen when there is no save data.

The default setting is “Display”.

Menu Screen Names and Functions

③ Aspect Button

Switches the horizontal ratio of the superimposed image. Each press switches between “Image having same ratio as the sheet surface” and “Image that is 3/4 size horizontally”. (Available only with Model C-12W.)

At time of saving, the image will be saved at the selected ratio.

The default setting is “Image having same ratio as the sheet surface”.

④ Full Screen Display Button

Provides a full screen display of the superimposed image. Clicking on the screen will result in a return to the original window size.

* Using the full screen display is convenient when projecting a superimposed image with the projector.

The default setting is “Window size”.

⑤ Captureboard Capture Screen

Execution of the scan operation displays the handwritten image data of the captured sheet surface.

⑥ Personal Computer Capture Screen

Pointers (⑦ to ⑨) of the personal computer screen that is projected by the projector are displayed by left clicking on the personal computer capture screen ⑥ and hidden by right clicking.

Drag the pointers to finely adjust the size and distortion.

To move the position, drag a part other than the pointers.

⑦ Horizontal Size Pointer

Corrects the size in the horizontal direction.

⑧ Vertical Size Pointer

Corrects the size in the vertical direction.

⑨ Affine Pointer

Corrects images that are diagonally distorted.

⑩ (Minimize)

Minimizes the superimposed image display screen, and the short title bar is displayed at the upper left of the task bar. In addition, clicking the minimize icon of the main menu when it is displayed with window size also results in the superimposed image display screen being displayed as an icon on the task bar.

⑪ (Maximize)

Each click switches the image display screen (window) between a maximized display or a display at the original size.

⑫ (Close)

Closes the superimposed image display screen.

Closing the superimposed image without saving it will cause the superimposed image to be lost.

Basic Operation

An example is given of a method for performing a presentation in which a projector projects images onto this machine, and the record is saved on a personal computer.

Before starting the operation, connect the various pieces of equipment and turn them on.

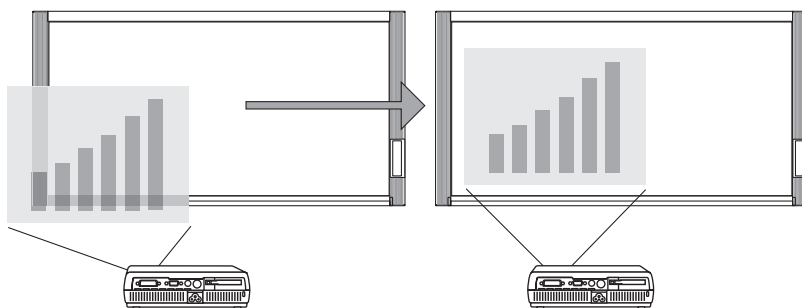
Superimposing captured images

1

Project the image of the personal computer from the projector

- ① Operate the personal computer and prepare the documents that will be projected with the projector.
- ② Adjust the size, display position, and other factors of the projector image.

Please see your projector manual for information about operation.



Note

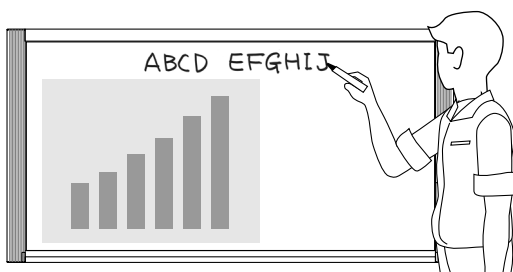
- A full screen display (in which the image is displayed to fill the screen without the display of tool bars, etc.) is recommended for the projection image from the personal computer. When not in a full screen display, tool bars and other items are superimposed. Please see the manual for your personal computer or the application software that you are using for details.
- When the screen of a personal computer is not projected from the projector, or the screen of a personal computer has disappeared, change the settings of the external output of the personal computer. In Windows, the switchover can usually be accomplished by holding down the [Fn] function key and pressing one of the [F1] to [F12] keys. The [F1] to [F12] keys will differ depending on the manufacturer of the personal computer. Please see the Help menu of your personal computer for details.
- An attempt to superimpose with a projection image that has used the digital enlargement function of the projector will not result in an enlarged image.
- Set up the projector so that it is level to prevent a projection image that is on an angle. When the projection image is on an angle, the size or position of the superimposed image might be improper. (Adjustment will be possible with this software.)
- Project the image so that it falls within the capture range of the Captureboard.
- Please project the image at a size that is 2/3 of the vertical size of the board surface or larger.
- The size and position of the superimposed image may be off if the projector's auto keystone (auto trapezoidal distortion correction) value is high.

2

Making a Presentation

Use the dedicated markers to write or draw diagrams on the sheet surface (including the projected area).

When saving the superimposed image as meeting records, do not write or draw diagrams in the four corners of the projection screen. The four corners will later be used for drawing position detection ○ marks.



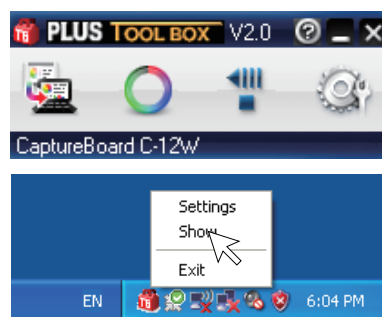
3

Save the Superimposed Image of the Projection Image and the Sheet Surface on the Personal Computer

Connect the captureboard with the computer on which "PLUS TOOLBOX" is installed using a USB cable (see page E-5).

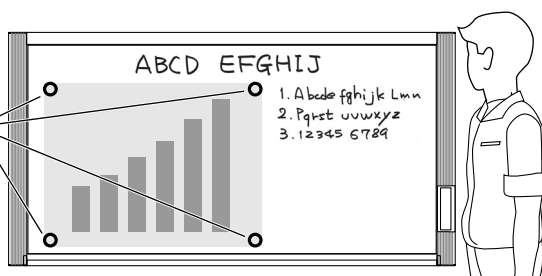
The "PLUS TOOLBOX" main menu appears on the computer's screen.


- PLUS TOOLBOX is resident in the system tray. The main menu appears automatically when the computer is connected to the captureboard.
- The main menu can also be displayed by right-clicking the PLUS TOOLBOX icon in the system tray and choosing "Menu".



Positioning Marks

○ marks (by default: positioning marks with no specified color) appear in the four corners of the projector's projected image.



To change the colors of the ○ marks, click the Settings icon  on the main menu, then click the "Capture Settings" tag.

From "Select position detection color", select a marker color that is not used to draw on the sheet surface.

See "Capture Settings" on page E-18.

When the ○ marks are not displayed, click the  button of the menu.

Each click of the  button toggles between display and hide.



Note

Check whether this machine and the personal computer are properly connected. "PC" is displayed in the display window of the main unit control panel when the equipments are properly connected.

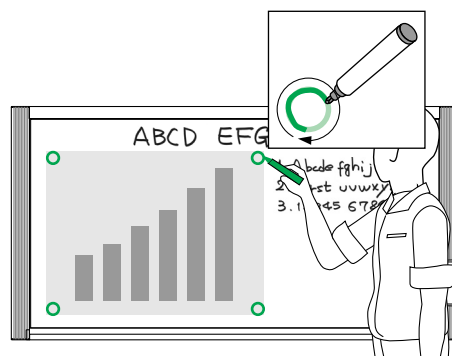
4

Trace with a Marker Having the Same Color as the ○ marks of the Projected Four Corners

Properly draw the ○ marks in the color of the projected marks.

Note

- This software uses the ○ marks drawn on the sheet surface to position the projection image and the sheet surface. Blurry or broken ○ marks might not be recognized.
- Do not write or draw diagrams near the ○ marks.
- When an image with extreme keystone distortion is projected as is, it may not be possible to recognize the ○ marks.
- When the ○ marks are not drawn, the projection image will be superimposed at the upper left.
- Content that has been drawn at the periphery of the sheet might not be captured. Please see "Effective Reading Size" in your Captureboard manual for details.
- Animation cannot be captured as a personal computer capture image.



5

Click the (Scan) Button of the Menu

Displays the projection image superimposed screen.



6

Click [Yes]

The sheet surface of the Captureboard will be scrolled, the capture will start and be completed.

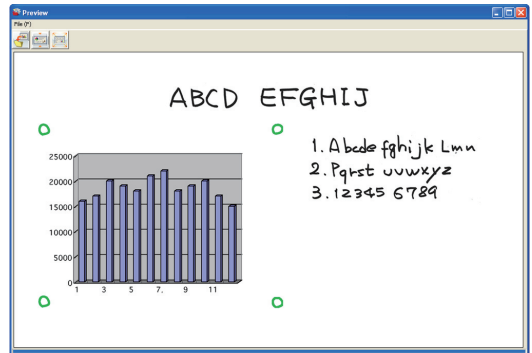
Then the hand written and drawn image will be transferred to the personal computer.

In a little while the superimposed image display screen will open.

When the personal computer capture image and the Captureboard capture image are shifted on the superimposed image display screen, see "Fine Adjustment of the Captured Image" on Page E-17.

If you do not want to combine the hand-drawn image on the sheet surface with the projector's projected image, click "No".

When "No" is clicked, the captureboard capture image preview is displayed.



Note

- Black and white is set if "Prohibit Color Mode" is set to "On" in "Machine Settings".
- Use the Density button on the main unit's control panel to set the scanning density.
- When "Header/Footer" is set to "On" in "Hardware Setup" (see page E-22), the header/footer information is displayed on the combined image. In this case, this information is saved and printed.

7

Click (Save) to Save

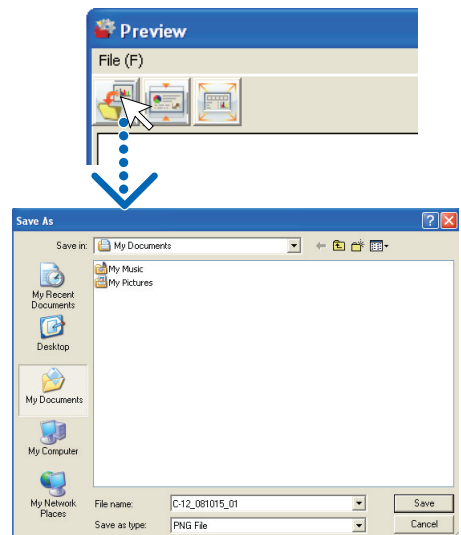
- When saving for the first time, clicking will display the personal computer [Save as] box.

Select "Save location" "File type", enter the file name, then click the [Save] button.

- Select the file type ("PNG", "JPG" or "PDF") using the ▼ button.
- A file name consisting of the model name, date and serial number (ex. C-12_081021_01) is displayed automatically. Change it if necessary.
- If a file with the same name already exists, the old file is overwritten.
- To create a new folder, click [Create new folder] or click the icon, enter the folder name in the newly created folder, then click [Open].

Next, select the file type, enter the file name, then click [Save].

- [Save] or [Save as] can be selected from [File] of the menu bar.



Continued on next page

Step 7 (continued)

This permits the saving of the superimposed image of the hand written and drawn image data of the Captureboard sheet surface and the projector projection image.

Using this saved image, a meeting report or document can be created.

8

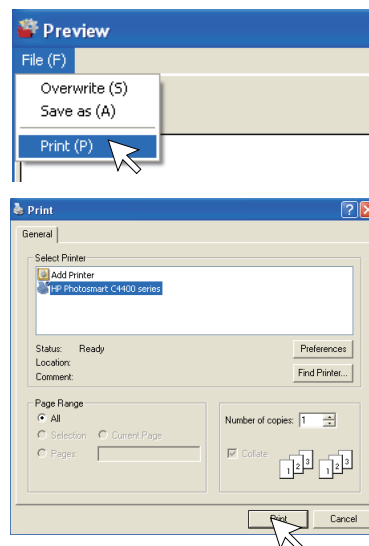
Printing

Printing is performed by the printer that is connected to the personal computer.

- ① Select [Print (P)] from [File (F)] of pull-down menu.
The printing settings screen will open.
- ② Clicking the [Print] button will print the selected image.
Clicking the [Detailed Settings] button for settings.
This screen will differ depending on the printer.

Note

The superimposed image cannot be printed directly using the Captureboard and the printer connected to it (which is sold separately).



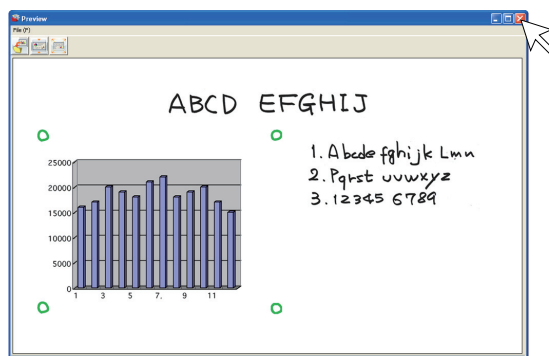
9

Closing

Clicking (Close) will close the superimposed image display screen.

Closing the superimposed image without saving it will result in the loss of the image.

To capture with the next sheet surface, proceed from Step 4.



Closing this Software

Clicking (Close) of the main menu will close this software.

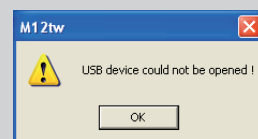


Notice

When other TWAIN compatible applications are used to capture the picture data, while PLUS TOOLBOX software is running, following procedure should be taken.

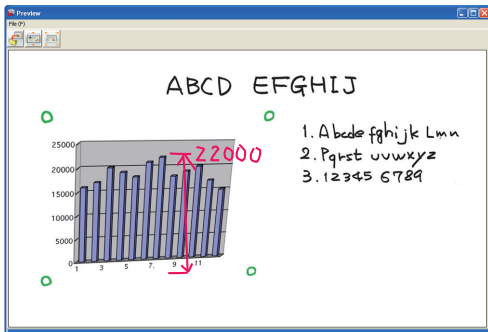
When PLUS TOOLBOX is running or its icon appears on the Windows task bar, and the picture data is attempted to be captured using other TWAIN compatible application software, below error message may pop up.

In this case, right-click the PLUS TOOLBOX icon on the task bar to quit the program and start capturing procedure using other TWAIN compatible software.

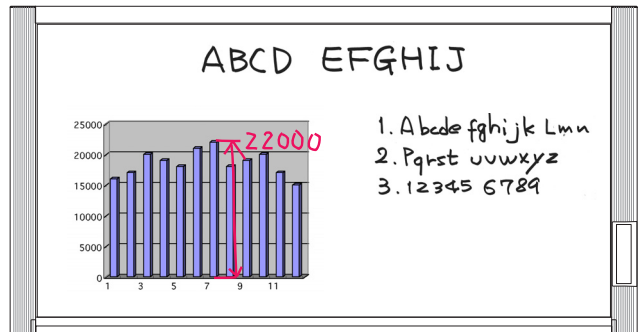


Fine Adjustment of the Captured Image

When the positions of the personal computer captured image and the Captureboard capture image (such as writings and drawn on the board surface) differ on the Superimposed Image Display Screen, this function changes the position or size of the personal computer capture image on the Superimposed Image Display Screen.



Superimposed Image Display Screen



Model C-12W captureboard

Adjusting the Display Position of the Image

Drag the personal computer capture image to the target position.

Adjusting the Image Size or Distortion

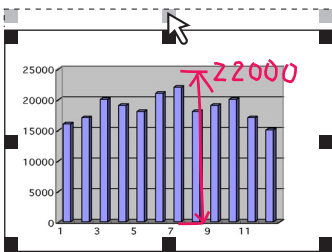
A left click on the personal computer capture image will display the pointers (in 8 locations).

Drag the pointers and adjust.

Right click to delete the pointers.

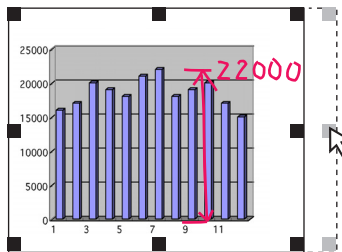
To stretch vertically

Drag the center top or bottom pointer.



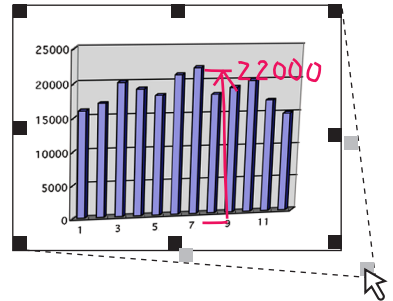
To stretch horizontally

Drag the center left or right pointer.



To stretch diagonally

Drag the pointers of the four corners.



Note

This software creates on the personal computer a superimposed image of the image transferred to the personal computer (that was hand written and drawn on the sheet surface of the Captureboard) and the personal computer screen (which is the screen output for projection by the projector).

When the keystone distortion (horizontal distortion/vertical distortion) of the image projected by the projector is adjusted, it will be slightly smaller than the output screen from the personal computer screen. (The size of the image changes depending on the degree of distortion compensation.) This is a result of the compensation characteristics of the projector. As a result, the position matching or image size will differ slightly. The position move adjustment or the image size adjustment are used to correct this condition.

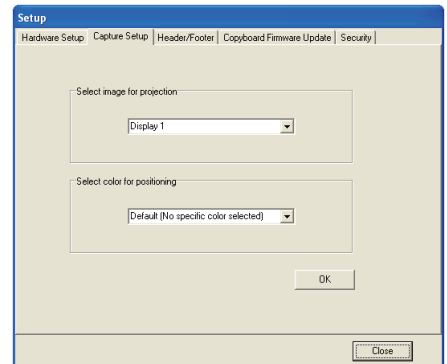
Capture Settings

These settings perform the selection of the monitor that is connected to the projector and the selection of the ○ mark color used for position detection.

1

Click the (Settings) Icon of the Menu

The settings screen will open.



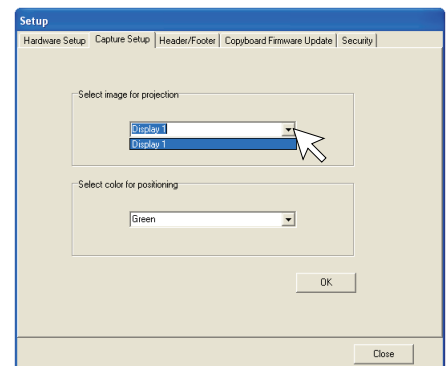
2

Select the Number of the Monitor that Is Connected to the Projector that Projects to the Captureboard

This is set when a personal computer that can accept the connection of multiple monitors and a projector are connected. There is no need for this setting when there is only one monitor.

Clicking [▼] of the [Select image for projection] column will display a list. Click the desired monitor number from this list.

This software automatically searches for the number of connected monitors.



Note

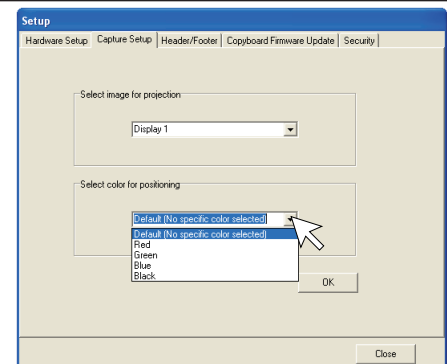
When the number of the monitor is not known, click “Screen Properties” → “Settings” → “Identification” on the personal computer and check the number of the monitor that is connected to the projector.

3

Change the Setting of the ○ Mark Color Used for Display Position Detection of the Projected Image of the Projector

Clicking [▼] of the [Select color for positioning] column will display a list.

Click the target color from among No specific color selected, Red, Green, Blue, Black.



Note

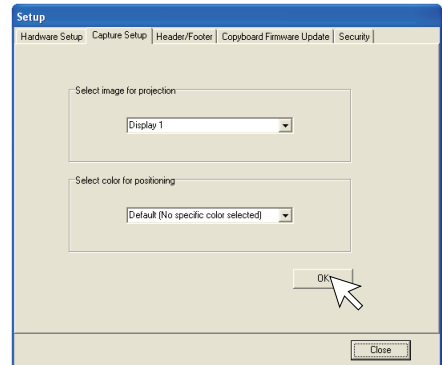
- When “No specific color selected” has been selected, an arbitrary marker color from among the four colors of red, green, blue, and black can be used for drawing the positioning mark. Recognition is judged solely by the shape of the ○ mark that has been drawn with the marker.
Writing or drawing a diagram that resembles the ○ mark may result in a position of the projection screen that cannot be properly recognized.
- When one color has been selected from among “Red, Green, Blue, Black”, the same marker color as the selected color can be used for drawing the positioning marks. Recognition is judged by the color and shape of the ○ mark that has been drawn with the marker.
Using the same color marker for writing or drawing a diagram that resembles the ○ mark may result in a position of the projection screen that cannot be properly recognized.

4

Finalizing

Click [OK] to set.

The main menu reappears if [Close] is clicked.



Hardware Setup

Use this procedure to set the captureboard's operating environment from the computer. The factory defaults are shown below.

Setting item	Description	Factory default
Color Mode	Color mode for scanning, Color/Black & White	Black & White
Density	Density for scanning, Standard/Dark	Standard
Date/time setting	Set of the date and time for the time stamp	Japan Standard Time
File Format	Sets the format of the images stored on the USB memory device. JPEG/PNG/PDF	PNG
Paper Size	A4/Letter	A4
Aspect Ratio	Sets the aspect ratio for printed images. Original Image/Match Paper Size	Match Paper Size
Erase Reminder	Sheet rear surface erase reminder function: Disable/Enable	Disable
Restrict color mode	Setting for disabling printing/storing in the color mode	Disable
Resolution	Selection of resolution for images stored in the memory and images transferred to the computer : Standard Standard : 1/2 the vertical/horizontal size of the scanned image High : 1/1 the vertical/horizontal size of the scanned image	Standard
Header/footer (date/time stamp)	Upon shipment from factory : Writing of date/time when printing/storing : Enabled/Disabled Original editing : Header/footer data output *	Enabled

* The date/time stamp can be displayed at the user's discretion as part of the header/footer data.
Upon shipment from the factory, only the time stamp is displayed.

1

Turn on the captureboard's power, start up the computer, then make the USB connections.

The "PLUS TOOLBOX" main menu appears on the computer.



2

Click the [Setup] button.

The [Hardware Setup] screen appears.



3

Click the desired item to select it.

For the radio buttons, when ☐ is clicked, it switches to ☒ (only one radio button can be selected within each item).

● Output setting

Color Mode

This sets the color of the output image.

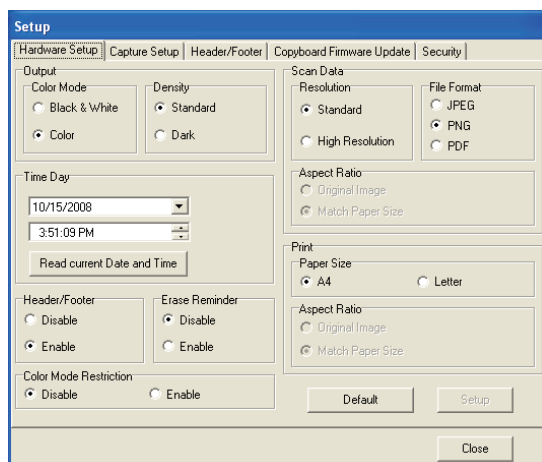
Color: Four colors (red, green, blue and black)

Black & White: Black only

Density

This sets the density of the output image.

If the output image is too light with the standard setting, set to "Dark".



● Print setting

This is operational when the Captureboard and printer are connected.

Paper Size

Select whether to print on A4 or letter size paper.

Note

Only printer models specified by PLUS can be connected to the Captureboard.

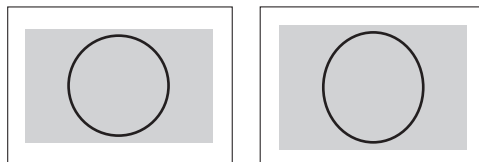
Aspect Ratio setting (model: C-12W)

Selection is permitted only with a Captureboard of the wide type.

Select the vertical/horizontal aspect ratio for printing.

When "Original Image" is selected, the image is printed with the same aspect ratio as on the captureboard's sheet surface.

When "Match Paper Size" is selected, the image is compressed in the horizontal direction to the same aspect as the A4 or letter size printing paper (for example, a circle will become an oval).



● Time Day

This sets the current date and time.

Loading the current time

When "Read current Date and Time" button is clicked, the display switches to the computer's current time. This eliminates the need to set the current time on the captureboard.

Setting the date

1. Click [▼] at the Time Day section to display a calendar.
2. Click [◀] or [▶] on the calendar to choose the calendar for the current date (year and month).
 - When [▶] is clicked while December is displayed, the calendar switches to the next year.
 - When [◀] is clicked while January is displayed, the calendar switches to the previous year.
3. Click today's date.
 - When clicked, the calendar closes and the current day is changed.

Setting the time

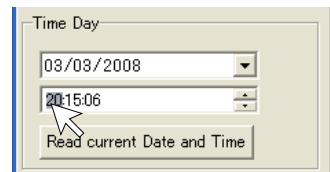
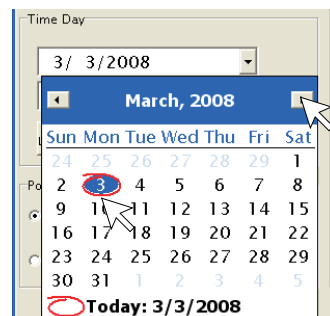
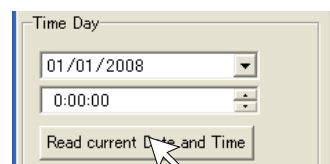
By factory default, the time is set to Japan Standard Time.

PLUS TOOLBOX uses a 24-hour time display. Click to [▲] return, to [▼] advance.

1. When the hours (20 in this example) in the time section is clicked, a gray cursor is displayed over the hours.
2. Click [▲] or [▼] in the time section to choose the current hour.
3. Now click the minutes (15 in this example) to display a gray cursor over the minutes.
4. Click [▲] or [▼] to choose the current minutes.
5. Now click the seconds (06 in this example) to display a gray cursor over the seconds.
6. Click [▲] or [▼] to choose the current seconds.

Note

- The clock starts when the [Setup] button is clicked.



● Color Mode Restriction

This sets whether to read in color or black and white when reading the sheet surface. Setting Color Mode Restriction to "Enable" will result in black and white (gray scale) printing, USB memory saving, and the transfer image to the personal computer.

Disable: Reading will be in the color mode.

Enable: Reading will be in the black and white mode.

Hardware Setup

● Scan Data

Resolution

This is the selection of the resolution of the images saved in USB memory, and the transfer images when there is a PC connection.

Standard: Vertical and horizontal dimensions of the read image will be one-half size. This will be one-quarter the amount of image data as compared to the selection of High Resolution.

High Resolution: Vertical and horizontal dimensions of the read image will be 1:1 size. This will result in an image that appears better than with the standard selection.

File Format

Select the format of the images stored on the USB memory device, JPEG (".jpg" extension), PNG (".png" extension) or PDF (".pdf" extension). Images scanned when a computer is connected can be selected when storing acquired data.

● Aspect Ratio (Model: C-12W)

Selection is permitted only with a Captureboard of the wide type. This is the selection of the aspect ratio of the images saved in USB memory, and the transfer images when there is a PC connection. The "Original Image" will be the same ratio as the Captureboard sheet surface. "Match Paper Size" will compress the ratio of A4 size or letter size in the horizontal direction (e.g., a circle will become an ellipse).

● Header/Footer

This setting determines whether or not to write the date/time stamp (the factory default), or output the header/footer information stored in the Captureboard.

Disable: No output of header/footer information (including date/time stamp).

Enable: Outputs the header/footer information to each of printing, USB saving, and transfer images when there is a PC connection.

Note

- This inserts a title or company name, a date or other text or an image into the margin at the top and bottom of the sheet, and the same information will be printed on any page. This is called a header (when the information is at the top) or a footer (when the information is at the bottom). The header/footer is created with this software and stored in the Captureboard. See "Creation and Editing of Headers/Footers" (on Page E-23) for details.
- The actual printout color may differ from the original image depending on the printer models.

● Erase Reminder

This setting issues a remind of the Erase Reminder for text or diagrams drawn on the Captureboard sheet rear surface. This is effective for confidential meetings, etc.

Disable: The Erase Reminder function will not operate. (Factory default)

Enable: Pressing the power button and turning off the power will result in the simultaneous flashing of the display window of the Captureboard control panel and all of the indicators. The sheet will automatically move up to a surface that has not been erased, and then the power will be turned off.

Note

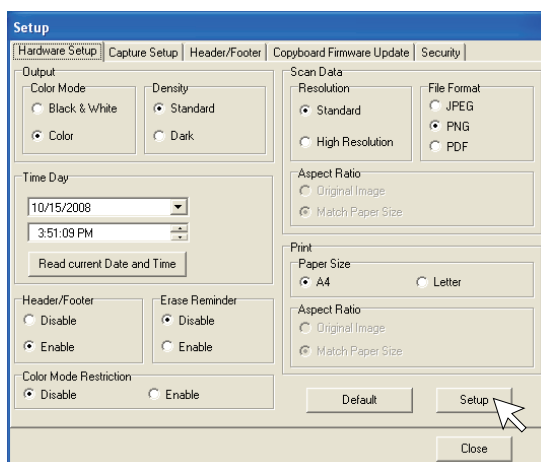
- Soiling of the sheet weld portion, or marker residue may result in improper operation of the Erase Reminder function.

4

Set the selected data.

Check the settings of the items you have changed, and if they are OK click the [Setup] button.

- Click [Close] if you do not want to change the settings. The changes are canceled.
- Click [Default] to return all the settings to the factory defaults.



Creation and Editing of Headers/Footers

This is the creation and editing of the headers/footers that print or display the company name, logo, or other information at the top and bottom of the printing paper or acquired image.

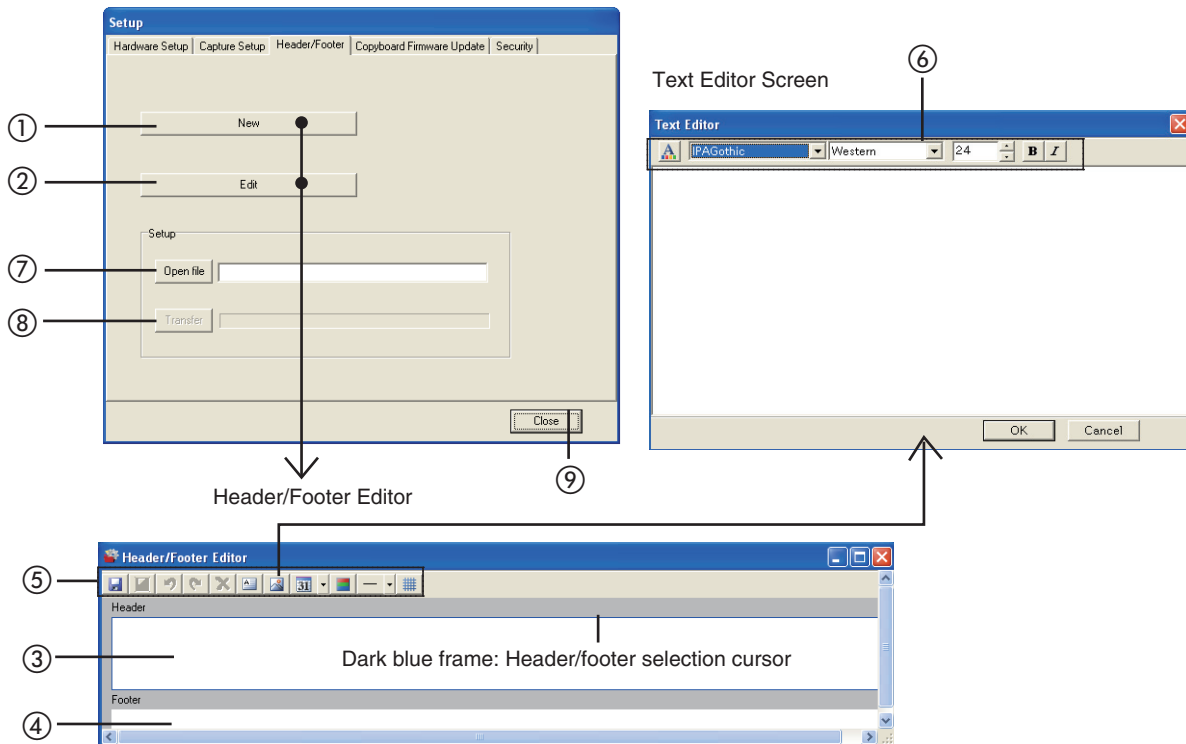
The factory default is the registration of only the date/time stamp in the Captureboard.

Updating the header/footer information that was created with TOOLBOX and setting the header/footer function to “Enable” permits the same information to always be printed, saved in USB memory, or displayed in the transfer images sent to the personal computer.

Creation and editing may be performed even when there is no connection with the Captureboard.

Names and Functions of the Screen Parts

Clicking [Setup] → [Header/Footer] on the TOOLBOX menu will display the “Header/Footer” screen.



● Header/Footer Editor

① New button

Click this to create new headers and footers. This will open the “Header/Footer Editor”.

② Edit button






Click this to edit the header/footer file (having an .hfd extension) that is saved in the personal computer.

Selecting the header/footer file with the “Open file” screen of the personal computer will open the “Header/Footer Editor”.

③ Header edit box / ④ Footer edit box

This inserts the text or diagrams of the headers and footers. To switch the input of the headers and footers, click a location other than the text box or image box and the header/footer selection cursor will move.

⑤ Tool button

- | | | |
|---|------------------|--|
|  | Overwrite | This enables you to overwrite the editing content. When it is a new file, the “Save as a new file” window will open. |
|  | Save as | This enables you to save a file in a different name. When it is a new file, the icon will be displayed in gray and not functional. |
|  | Undo | This returns the edited content in order from the prior operation (for up to two cycles). |
|  | Redo | This executes again in order the operations that were returned with “Undo”. |
|  | Delete | This deletes the selected diagram/image or text box. |



- Insert text** The text input screen will open. This screen is used to input text and select items such as font type and size of the text. See “Text Editor Tool” below. Clicking the text input [OK] will position it as a text box at the upper left of the editing box.
- Double clicking the text box of the editing box will display the text input screen. Double click to correct the text.
 - The text box is transparent. Images or text behind it can be seen.
 - A text box can be placed multiple times.



Image Insertion and Editing

The “Open file” screen of the personal computer will open. File formats that can be inserted are BMP, JPEG, PNG, GIF, WMF, and EMF.

Selecting and finalizing an image will place it as an image box at the upper left of the editing box.

- An image box can be placed multiple times.
- An image box is non transparent. Images or text behind it will be hidden.



Insertion of the Date and Time

Insertion can be made to one location, either the header editing box or the footer editing box. Click [▼] and select the display format of the date and time from the pull-down menu.

Display Format	Stamp Examples
YYY/M/D/ HH:MM	2008/10/5 13:25
DD-MMM-YYYY HH:MM	05-Oct-2008 13:25
MMM-DD-YYYY HH:MM	Oct-05-2008 13:25

Clicking on Insertion of the Date and Time will insert a header editing box at the lower right, and a footer editing box at the upper right.

- When an editing box has been inserted, the Date and Time insertion button will turn gray and cease to be selectable.
- The date and time will be displayed as non-transparent in the front screen.
- The font, size, and other parameters are fixed and only the placement can be adjusted.



Header and Footer Background Color Specification

Clicking this will display the background color selection menu. Clicking on the target color from among the 48 colors will fully paint over the header editing box or the footer editing box with the selected color.

- The background color can be placed multiple times.
- When the grid lines are displayed and the entire surface of the editing box is set to the background color, the grid lines will cease to be visible. In view of this, insert the background color after completing the placement adjustment of the image or the text box.



Insertion of Division Lines

Click [▼] and select the (fine, medium, or broad) line width from the pull-down menu. Clicking on Insertion of Division Lines will make an insertion for the full box width at the bottom for a header editing box, and at the top for a footer editing box.

- Division lines can be placed multiple times.
- The color of division lines cannot be changed.



Display of Grid Lines

These are grid lines for the placement of text or image boxes, etc.

- **Grid lines** cannot be saved.
- Grid lines are displayed at the very last.

- **When an image, diagram (grid lines/background color), or text is inserted, each one forms a box and is placed in an editing box. The size of this box can be changed, and the front-to-back order can be swapped. See Page E-25**

⑥ Text Editor Tool



Setting of Character Color

Clicking this will display the text color selection menu. Clicking on the target color from among the 256 colors will change all the text colors inside the text input box.



Specification of Font

Click [▼] and select the font from the pull-down menu. All the fonts will change inside the text input box.



Specification of Language

Click [▼] and specify the input language from the pull-down menu. All the fonts will change inside the text input box.

Notice Changing the setting of the language during text input from “Japanese” to “Western” will result in resetting of the input screen.

Creation and Editing of Headers/Footers

Specification of Font Size

Click [▲] or [▼] and specify the size of the text.

All the sizes will change inside the text input box.

- The numbers are point sizes.
- Sizes that exceed the height of the header editing box or the footer editing box cannot be specified.

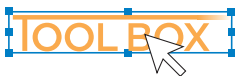
Specification of Bold

Each click toggles the selection between [Bold] and [Standard]. All the text will change inside the text input box.

Specification of Italic

Each click toggles the selection between [Italic] and [Standard]. All the text will change inside the text input box.

● Change of Size and Swapping of Front-to-Back Order

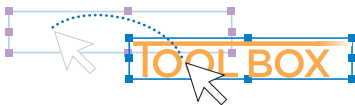


Selection of Objects

* The term object indicates an image, text, division line, background color, or date and time.

* There is an operational restriction for some objects.

When clicked, a box frame and adjustment points will be displayed around the inserted object.



Movement of Objects

The object is dragged.



Horizontal Adjustment of Objects (image, division lines and background color)

Drag either the left or right point.



Vertical Adjustment of Objects (image and background color)

Drag either the top or bottom point.



Enlargement/Reduction of Objects (image and background color)

Drag any of the corner points.



xxx Place of Business



Changing the Front-to-Back Order of the Objects

Insertion images are non-transparent, and text is transparent. Right-click the object for a layered display of the underneath text, etc. The front-to-back order menu will be displayed. Select [Move to front] or [Move to rear].

- The display order of grid lines and background color is fixed. The front-to-back order cannot be changed.

⑦ Open File button

Displays the “Open file” screen of the personal computer.

Select the header/footer file (having an .hfd extension) to be updated in the Captureboard.

* Verify that the Captureboard and the personal computer have a USB connection, and that the power of the Captureboard is turned on.

⑧ Transfer button

Transfers header/footer information to the Captureboard.

The transfer will start and the progress will be indicated on the transfer condition bar. During the transfer “HF” will flash in the display window of the Captureboard.

The verification screen will be displayed when the transfer is completed. Click [OK].

Next, a press of the “Save” button will result in the display window of the Captureboard changing to indicate “H1”, and the update will be completed.

Press any of the Captureboard operation buttons to change to the normal mode.

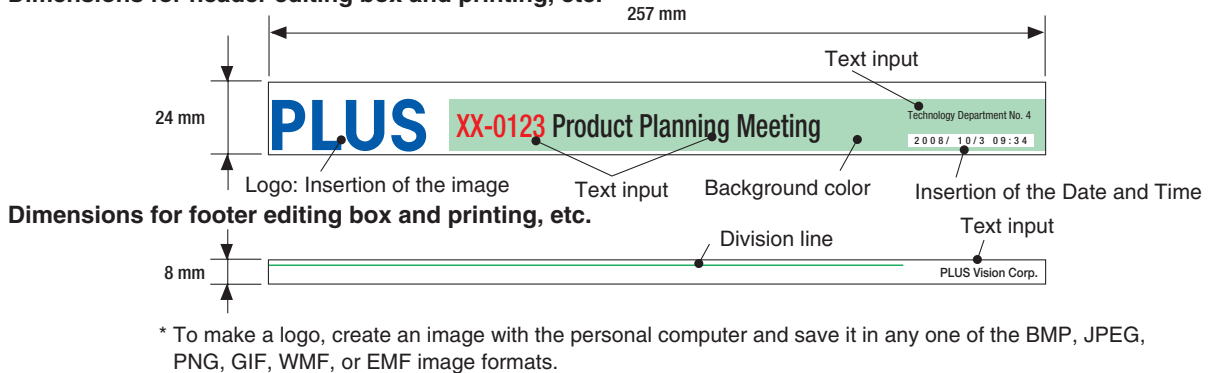
⑨ Close button

Closes the setting screen.

Creating a New Header/Footer

The description will use the following sample. Creation and editing of the header/footer may be performed even when there is no connection with the Captureboard.

Dimensions for header editing box and printing, etc.



1

Change to the header/footer editing screen.

When there is a USB connection with the Captureboard:

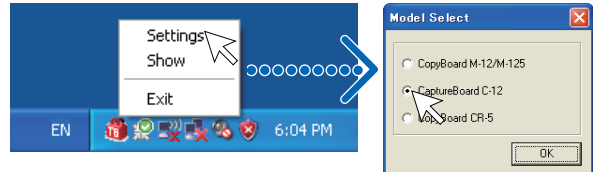
Click the [Setup] button of the "PLUS TOOLBOX" to open the setting screen, then click the [Header/Footer] tab.



When there is no connection with the Captureboard:

Right-click the PLUS TOOLBOX icon of the task tray and select "Settings".

Select the model of the Captureboard that you are using with the "Model Select" screen and click [OK].



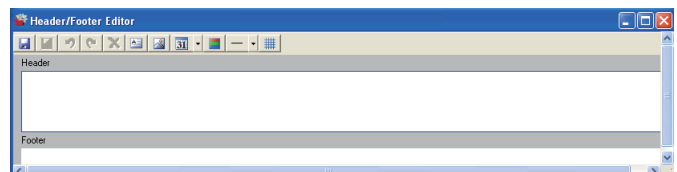
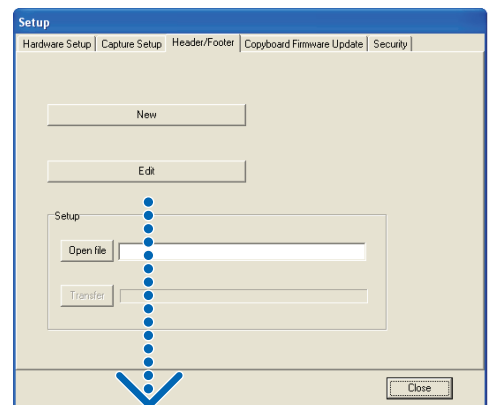
2

Change to the Header/Footer Editor.

Click [New] to create new headers and footers.

Click [Edit] when a file is already saved on the personal computer and corrections or other changes will be added.


The file will open and the screen will be displayed. Open the file that has the ".hfd" extension.



3



Creating Headers/Footers

When opened, the header editing box will be selected. Click the footer editing box to create a footer. The dark blue frame will move to the footer.

- Click  (Image Insertion) and select the target image from the "Open file" screen.

The image will be placed at the upper left of the editing box.

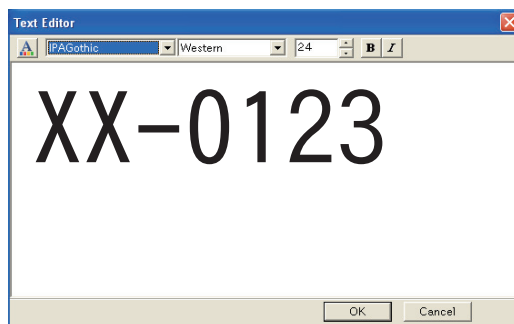
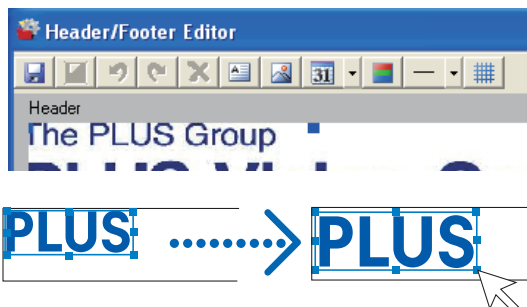
Adjust the position or size. See "Change of Size and Swapping of Front-to-Back Order" on Page E-25

- Click  (Add text) to open the text input box, enter the text, click  (text color specification) and specify the text color, then click [OK].

The text will be placed at the upper left of the editing box.

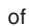


Adjust the position. When the text and image overlap and the text is hidden, the text will be brought to the front.


See "Change of Size and Swapping of Front-to-Back Order" on Page E-25




- Other text will also be input and placed in the same area. Create the respective types when changing the text size or text color, etc.



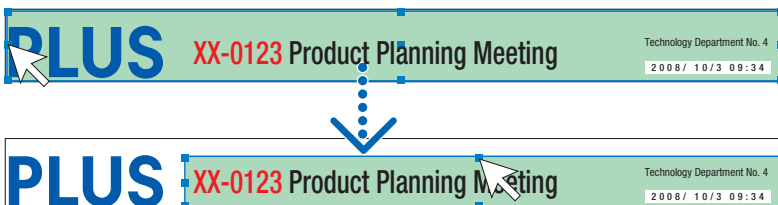
- Click  of  (Date and Time Insertion) and click  after selecting the display format of the date and time. This will be inserted at the lower right of the editing box. The date and time box is always placed at the very front and is non-transparent. Movement of the position is possible.

When the date and time are inserted,  becomes gray to indicate that multiple placements are not possible.



- Clicking  (Header and Footer Background Color Specification) then clicking on the target color from within the menu will fully paint over the header editing box or the footer editing box with the selected color.

Adjust the size and position.



Creation and Editing of Headers/Footers

Step 3 (continued)

- ⑥ When creating a footer, click the footer editing box and move the dark blue frame.
The footer will be created in the same area as the header.


4

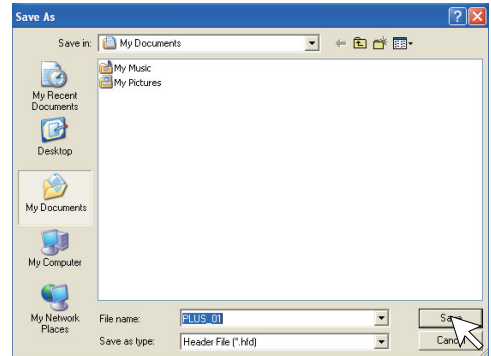
Saving on the Personal Computer

Click  "Overwrite save".

When it is a new file, the "Save as a new file" window appears.


Set such things as the saving destination, file name, and file type (noting that header/footer files have the .hfd extension) and click the [Save] button.

* Click  "Save as" when you wish to save a file under a new file name.



5

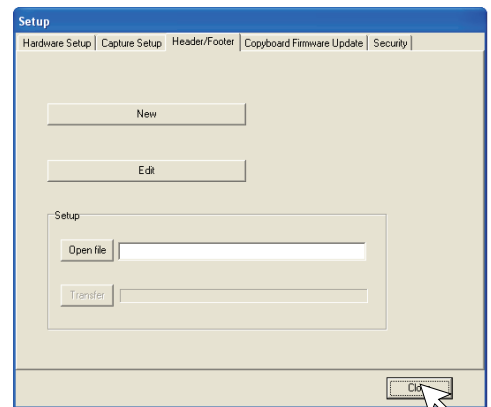
Close

Press the [Close] button of the [Setup] screen to close the setting screen, then click  (Close) of the main menu to close this software.

This completes the creation of headers/footers.

Update the header/footer information of the Captureboard.

See Page E-29



Updating the Internal Header/Footer Information of the Captureboard

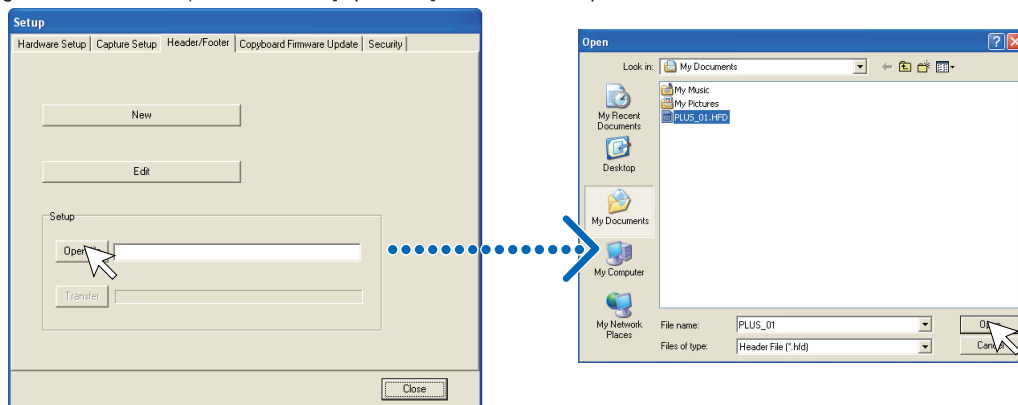
Two ways of updating the information are available. One way is to transfer the information to the Captureboard by connecting the Captureboard and personal computer via a USB connection. The other way is to save the information in USB memory and then insert the USB memory directly in the USB port of the Captureboard.

Updating by Establishing a USB Connection between the Captureboard and the Personal Computer

1

Open the header/footer file

- ① Establish a USB connection between the Captureboard and the personal computer. See Page E-5 for information about the connection
- ② Click the main menu [Setup] button → [Header/Footer] tag, and display the “Header/Footer” screen.
- ③ Clicking [Open file] will display the “Open file” screen of the personal computer. Select the target header/footer file (having the .hfd extension), and click the [Open File] button of the “Open file” screen.



2

Transferring the header/footer file to the Captureboard

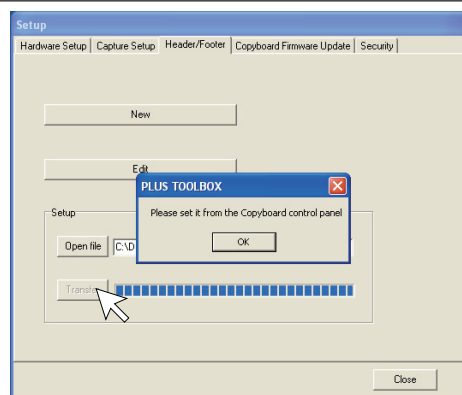
Click the [Transfer] button.

This starts the transfer. The verification screen will be displayed when the transfer is completed. Click [OK].

- During the transfer [HF] will flash in the display window of the Captureboard.

Transfer to the Captureboard is completed.

When closing this software, see step 9 on page E-16.



3

Updating the Header/Footer Information

Press the [Save] button of the Captureboard control panel. The flashing [HF] of the Captureboard display window will change to the [H1] display.

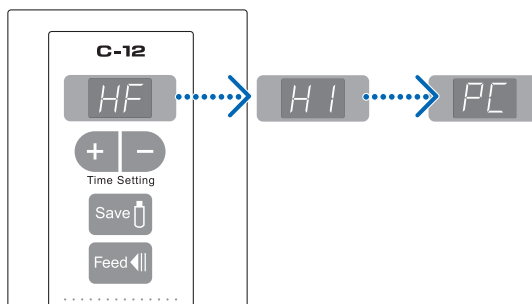
This completes the update.

Press a button other than "Save" or "Feed" on the main unit's control panel.

[H1] of the Captureboard display window will change to the [PC] display and the normal mode will be set.

To return to the header/footer default setting (i.e., only the date and time display), press the “Feed/Stop” button.

The display will change to the [H0] display of the Captureboard display window.



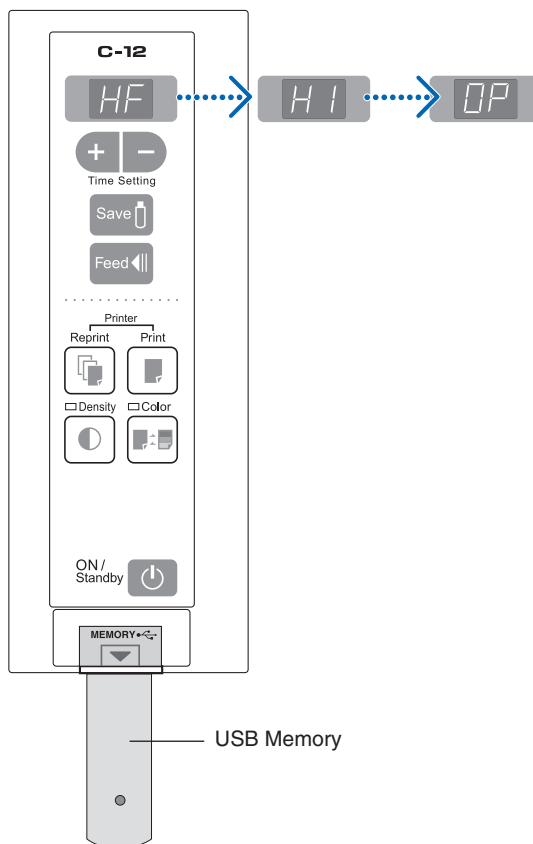
Updating from USB Memory

- ① Save the header/footer file in the USB memory.
Do not save within a folder of the USB memory. When USB memory is inserted in the USB port of the Captureboard, the Captureboard will search for the .hfd file. If the file has been saved within a folder, reading of the file will not be possible.
Note also that you should save only the target file. Reading will not be possible when multiple header/footer files exist.
- ② Insert the saved USB memory into the USB port of the Captureboard.
When the header/footer file has been found, [HF] will flash in the display window of the Captureboard.
- ③ Press the [Save] button of the Captureboard control panel.
When the updating of the header/footer information is completed, the Captureboard display window will change to display [H1].

Press a button other than "Save" or "Feed" on the main unit's control panel.

[H1] of the Captureboard display window will change to the [OP] display and the normal mode will be set.

To return to the header/footer default setting (i.e., only the date and time display), press the "Feed/Stop" button.
The display will change to the [H0] display of the Captureboard display window.




Caution

- When printing header/footer information or adding it to a transfer image, go to [Setup] and set [Header/Footer] of [Hardware Setup] to "Enable". (See Page E-22)

Update the Captureboard's Internal Program

Download the update program from the PLUS Corporation website.

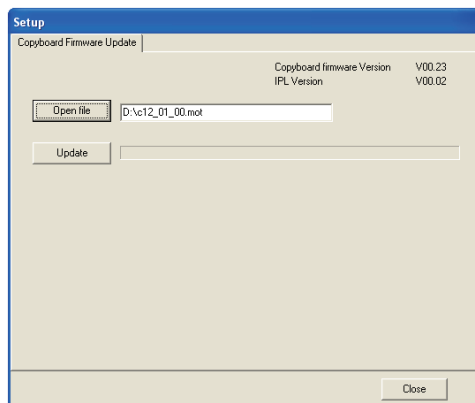
Preparations:

1. Download the "Copyboard Firmware Update" program ("C-12_XX_XX.zip") from the PLUS Corporation website.
2. Unzip the "C-12_XX_XX.zip" file and save the program file ("c12_XX_XX.mot").
3. If the captureboard's power cord is plugged into an outlet, unplug it.
4. Plug in the captureboard's power cord while pressing the Save  button.
5. Once "UP" is displayed flashing in the display window, execute "Copyboard Firmware Update".

1

Displaying the "Copyboard Firmware Update" screen.

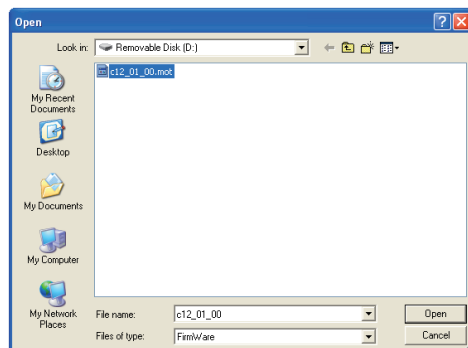
When a USB connection has been established between the personal computer and the Captureboard, the [Copyboard Firmware Update] screen will be displayed automatically.



2

Open the "c12_XX_XX.mot" update file.

- ① Click "Open file" to display the screen for opening the file.
- ② Select the M-12 update file ("c12_XX_XX.mot"), then click the "Open" button.



3

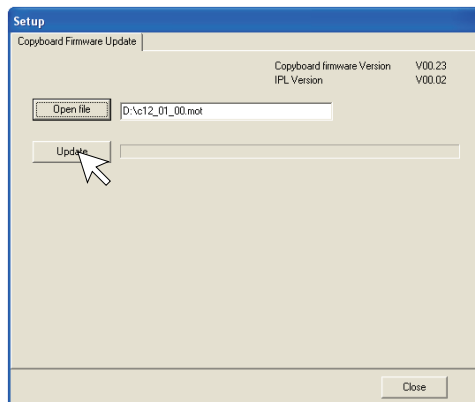
Click the "Update" button to start updating.

A status bar is displayed during updating. Please wait. When the update is completed, "RR" will be displayed flashing in the display window of the Captureboard control panel.

Notice

Do not perform other operations or turn off the captureboard's power during updating. Doing so could damage the captureboard.

After "RR" has begun flashing in the display window of the Captureboard, unplug the power plug from the power outlet, and then plug it in again.

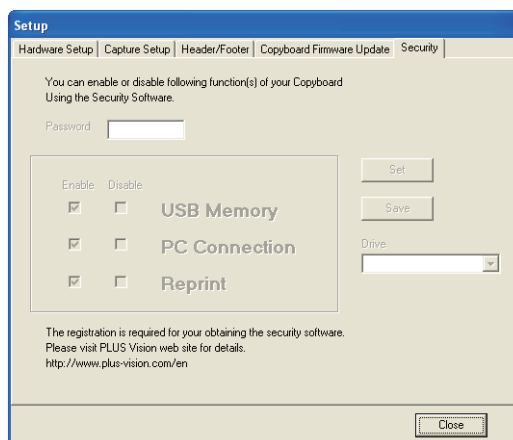


About the security settings

Use of the C-12 security software allows Enable and Disable restrictions to be applied to your machine's USB memory, PC connection, and additional printing.

Registration is required to obtain the software.

For details, please refer to the PLUS Corporation website.



PLUS Corporation

ISO 9001 certification. ISO 14001 certification.